



EEIGM

European School
of Materials Science and
Engineering



UNIVERSITÄT
DES
SAARLANDES



UNIVERSITAT POLITÈCNICA
DE CATALUNYA
BARCELONATECH



UNIVERSITAT
POLITECNICA
DE VALÈNCIA



UNIVERSITÀ
DEGLI STUDI
DI PADOVA

EEIGM

Rankings

2024

ENGINEERING SCHOOLS

GRAND EST REGION

l'Etudiant

- 1st Engineering school in 5 years**
- 3rd All engineering schools combined**

NATIONAL

**L'USINE
NOUVELLE**

- 1st International Programme**
- 1st Materials science**
- 8th General ranking**

A **CONSORTIUM** OF 8 **UNIVERSITIES**, A UNIQUE EUROPEAN ACADEMIC PATH

A **MULTICULTURAL** AND
INTERNATIONAL ENVIRONMENT

Luleå

Leoben

Brussels

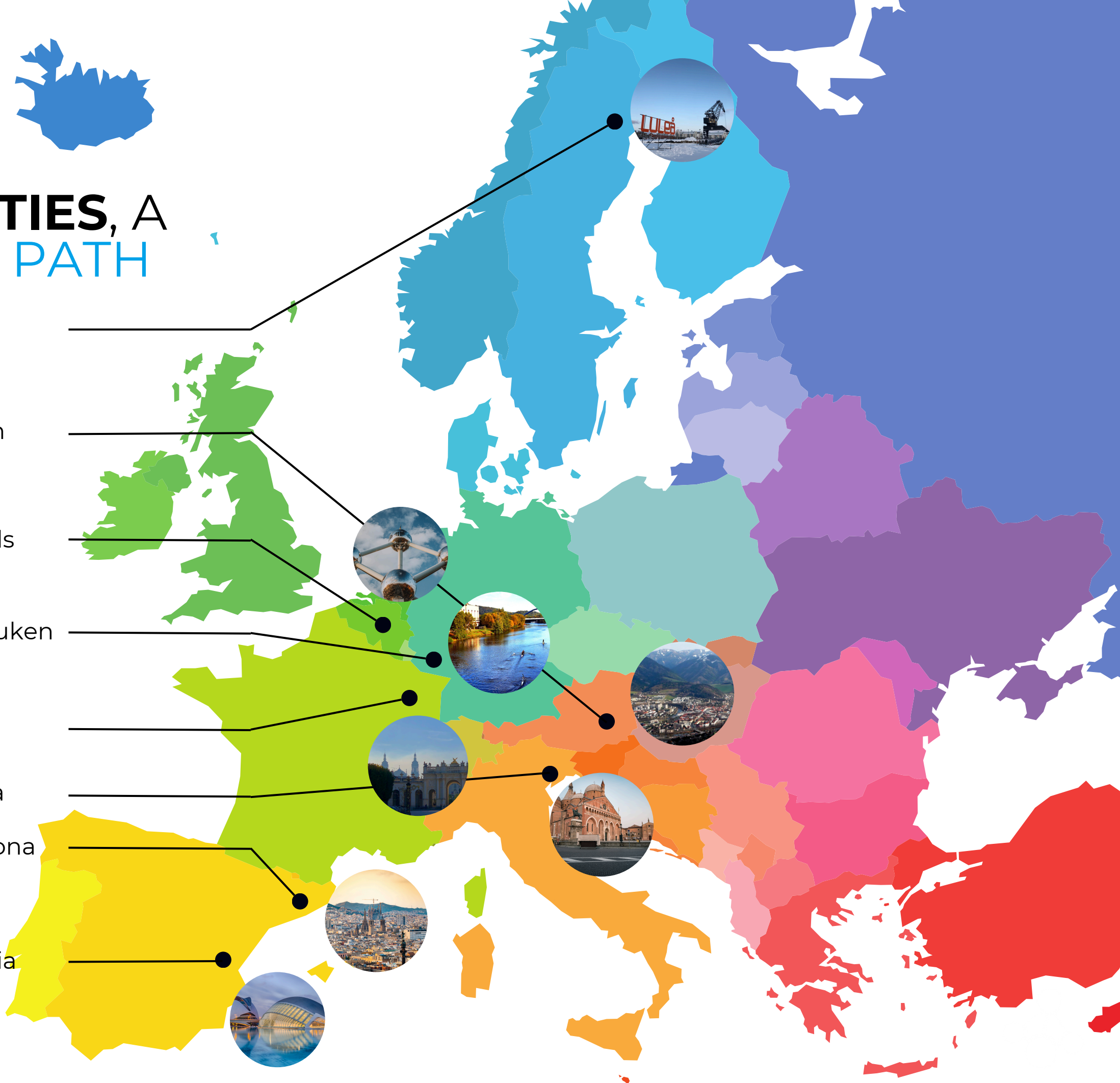
Saarbrücken

Nancy

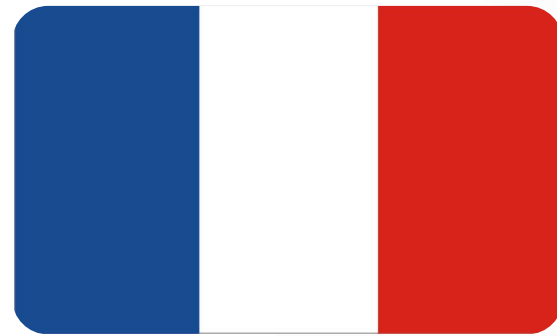
Padova

Barcelona

Valencia



A DIPLOMA SIGNED BY THE FOUR FOUNDING MEMBERS OF **THE EEIGM CONSORTIUM**



Université de Lorraine
1991



Universität des Saarlandes
1991



Universitat Politècnica de Catalunya
1991

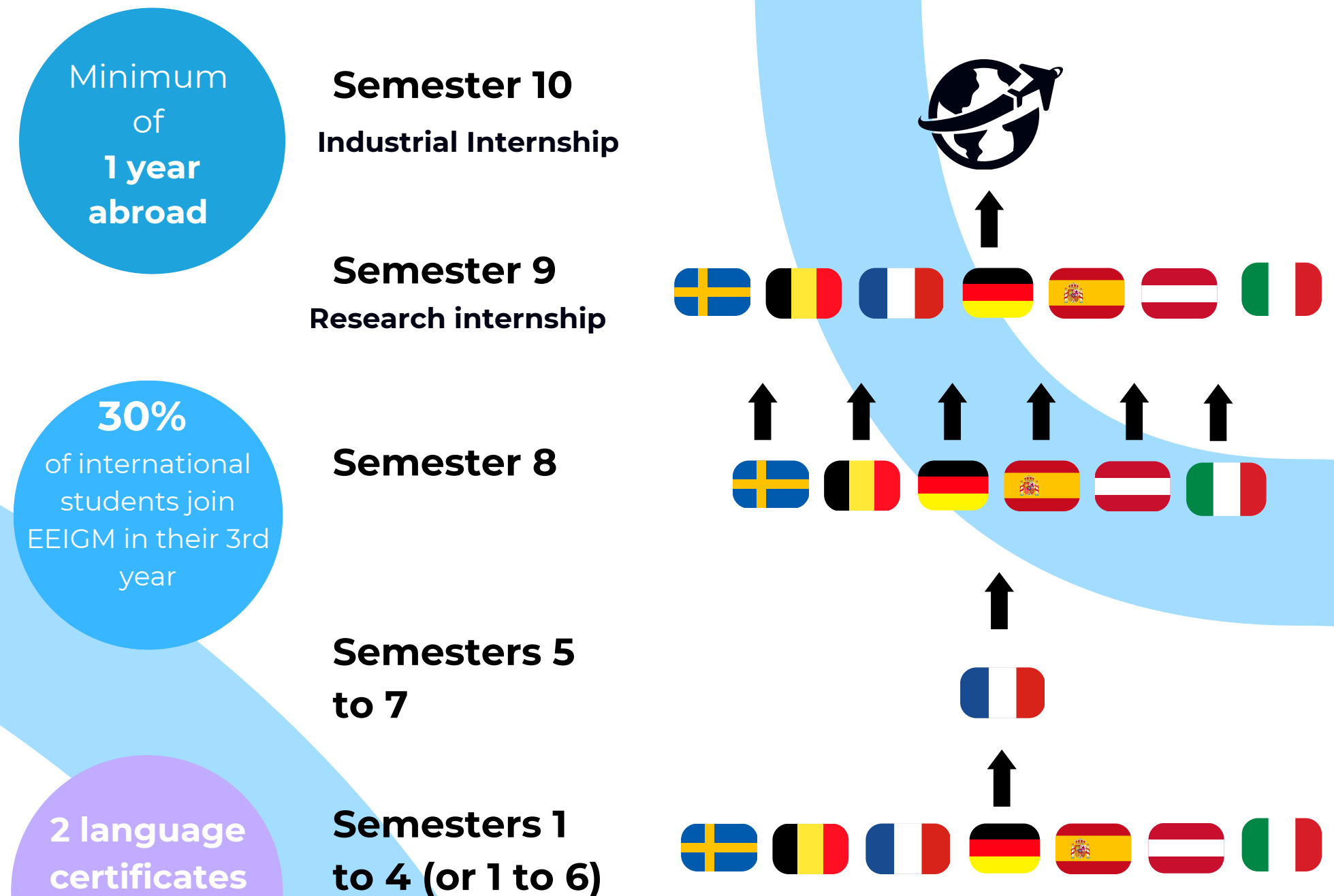


Lulea Tekniska Universitet
1993

AN EUROPEAN SCHOOL OPEN TO THE WORLD

minimum of **1 year** abroad for all students

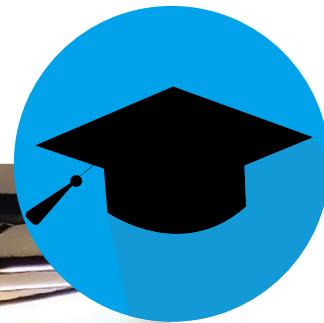
PATH - EEBE STUDENTS



All students from the **consortium** start at their home universities

A PUBLIC SCHOOL AT HUMAN SCALE

Around **100 students** in each year
Professors are always available to help students
Classes in **small groups** (**18** students max)



**1/3 OF CLASSES IN
LABORATORIES (TP)**



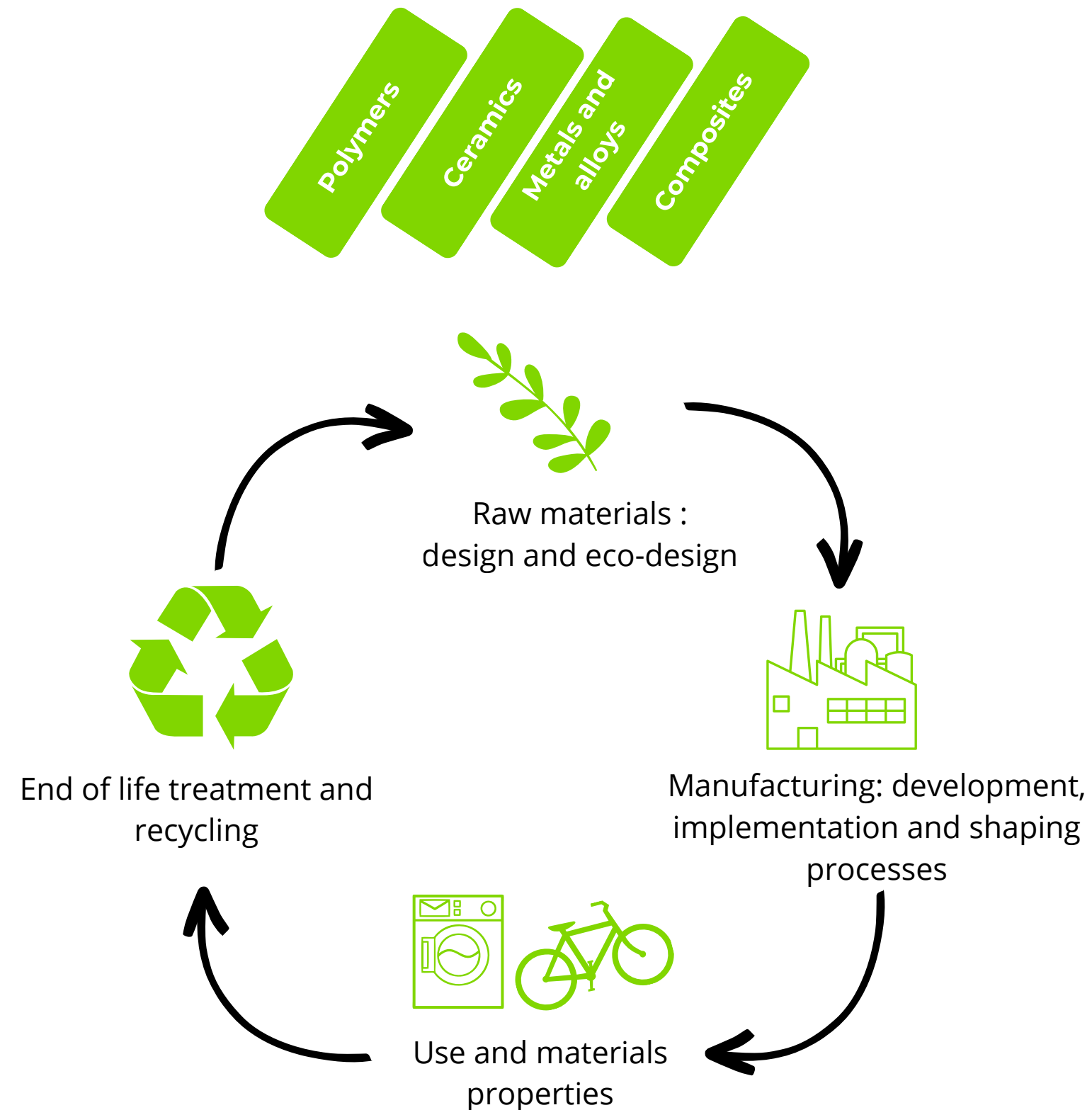
**1/3 OF CLASSES IN
AMPHITHEATERS (CM)**

**1/3 OF APPLICATION
COURSES (TD)**



STUDIES IN NANCY

Materials Science and Engineering



For international students

Intake : 3 weeks earlier than French students

- Intensive French Courses
- Refresher courses (scientific lectures)

During the first year

- Some lectures offered in English (quarter 1)
- French courses throughout the year

STUDIES IN NANCY

Materials Science and Engineering

OPTIONS



MATERIALS FOR HEALTH

MATERIALS FOR MOBILITIES



MATERIALS FOR ENERGY



STUDIES IN NANCY

Language courses

4

Languages taught:
French, English,
German and Spanish

2

Language certificates of
minimum **B2 level**

Students are
assessed upon entry
and join a group
corresponding to
their level.

Work in small
groups, language
practice, certificates
preparation.



MORE THAN 40 LABS THANKS TO OUR EUROPEAN CONSORTIUM



- Processing, characterisation and properties of nanomaterials and thin films
- Advanced manufacturing technologies
- Materials simulation and characterisation
- Materials for functional devices and systems
- Metal glasses, construction metals and functional metals



- Contact damage
- Polymers and Polymer matrix composites
- Advanced ceramics and coatings
- Micro and Nanomechanics



- Surface treatments
- Metallurgy
- Treatment/recycling of industrial wastes
- Precipitation of carbonates
- Thermal solar



- Welding
- Corrosion
- Powder metallurgy
- Electrodeposition of functional thin layers
- Laser Cladding and Thermal spray Coating



- Functional thin films and surfaces treatments
- Properties of nanoparticles
- Metallurgy
- Advanced metallic materials
- Materials and devices for energy
- Corrosion Science
- Composite materials
- Polymer engineering and recycling



- High performance composites and metals
- Nano and natural fibre composites
- Synthesis of new ceramic and metallic materials
- High temperature advanced materials
- Additive manufacturing of steels and intermetallics
- Nanomaterials for energy
- Hierarchical materials



- Advanced metallic materials
- Structural and functional ceramics
- Thin film technology
- Micro and Nanomechanics
- Polymer engineering and recycling
- Composite materials
- Additive manufacturing



- Chemical Bioengineering
- Advanced Ceramics and Glasses
- Nanomaterials Engineering
- Polymer Engineering
- Hybrid Materials
- Metallurgy
- Manufacturing Technology
- Computational Materials Science

MAIN INDUSTRIAL PARTNERS



SOME NUMBERS

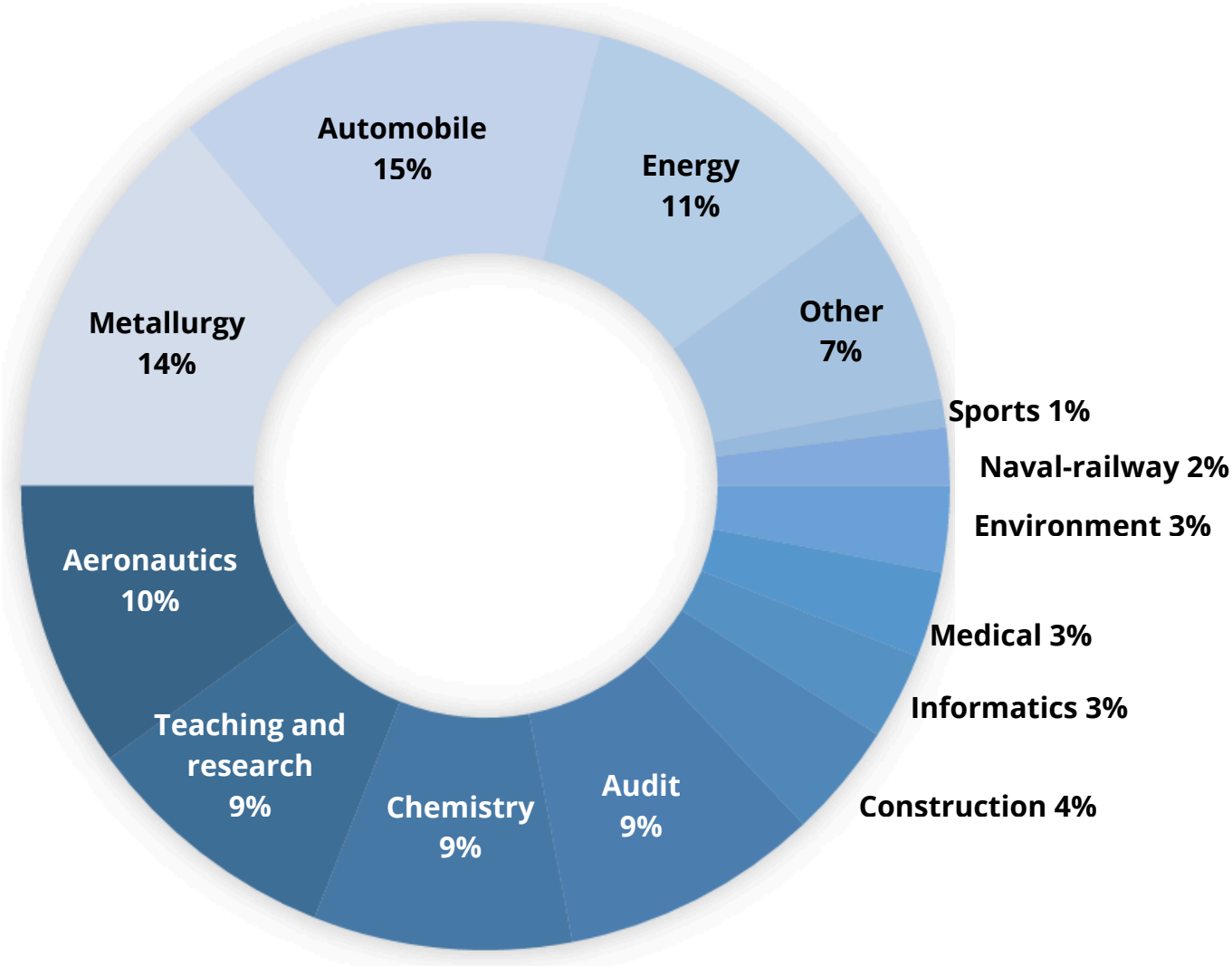
- ✓ Students find their first job **less than a month** after graduation.
- ✓ **50%** of students are **hired before the end of their studies**
- ✓ **50%** of our graduates start their **career abroad**
- ✓ Since 2014, **76** students from the **UPC** have graduated from the EEIGM program including 35 who started their career in Spain and 29 in other European countries (3 in Germany, 1 in Belgium, 1 in Denmark, 1 in Finland, 1 in France, 1 in Liechtenstein, 3 in Luxembourg, 6 in Sweden and 11 in Switzerland). 1 graduate started his career in China.

Data unavailable from 11 graduates.

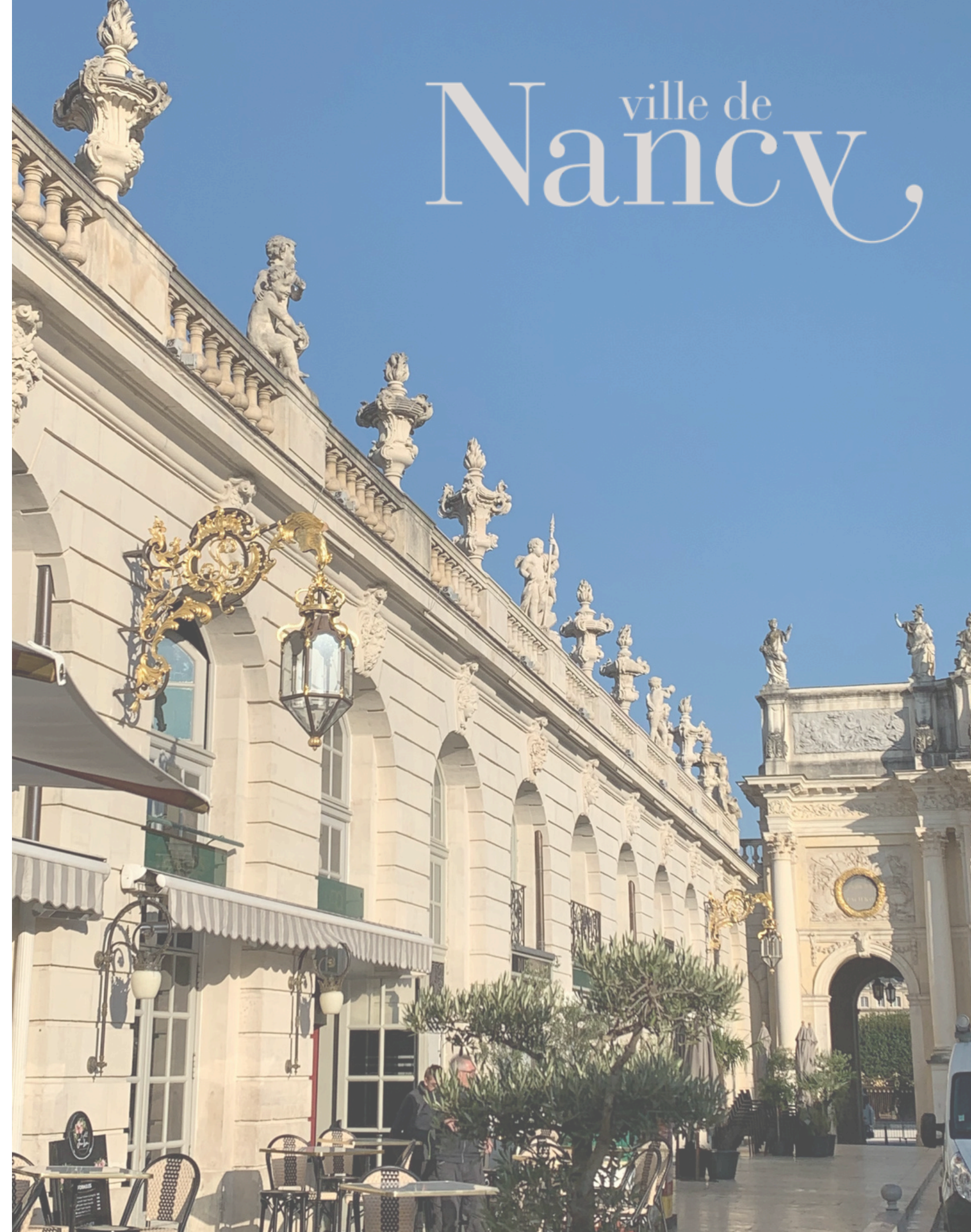
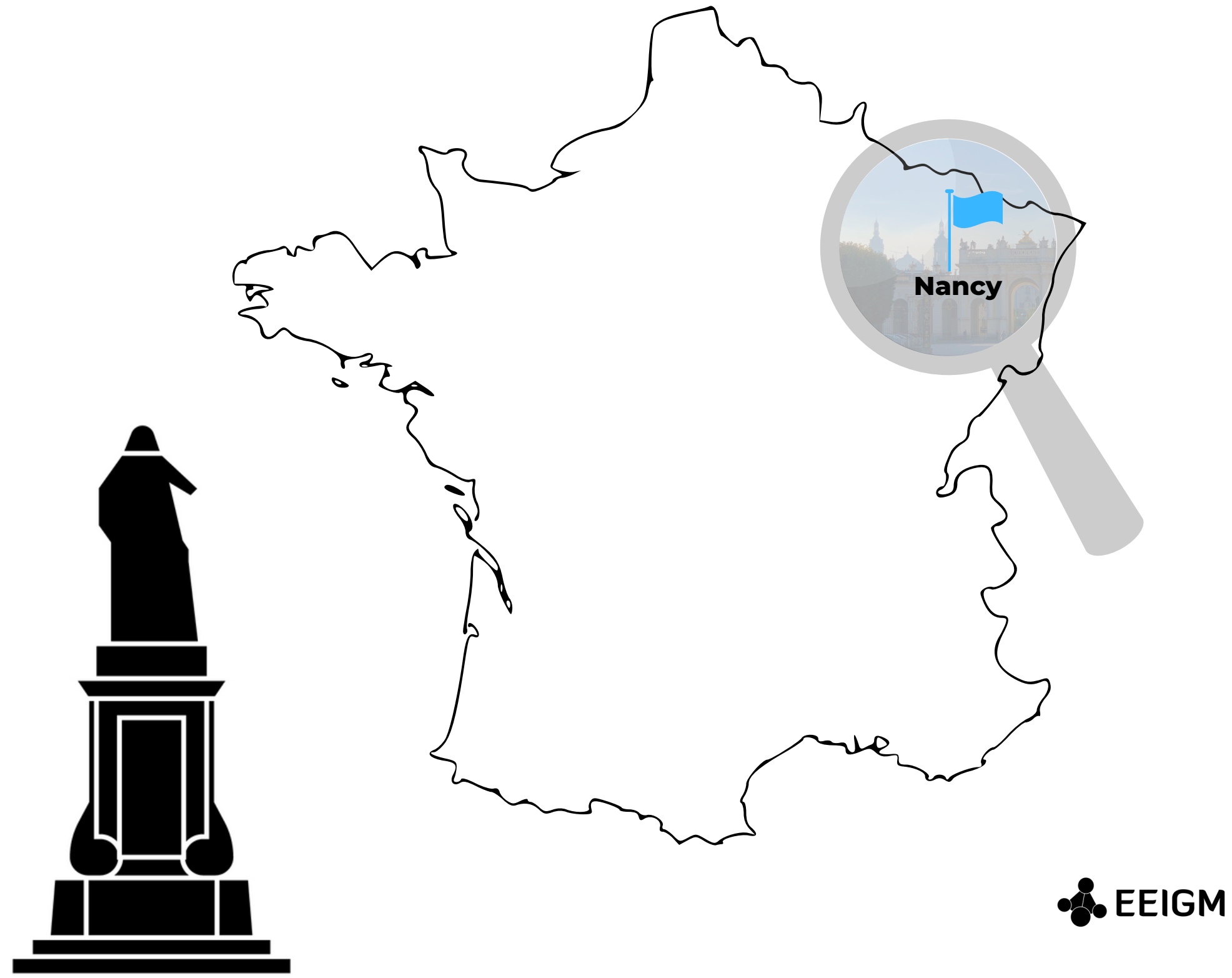
- ✓ Since 2014, **16** students from the **UPV** have completed the double-degree; 8 started their career in Spain and 7 in other European countries (2 in Germany, 2 in France, 1 in Luxembourg, 1 in Slovakia and 1 in Switzerland).

Data unavailable from 1 graduate.

IN WHAT SECTORS DO OUR GRADUATES WORK ?



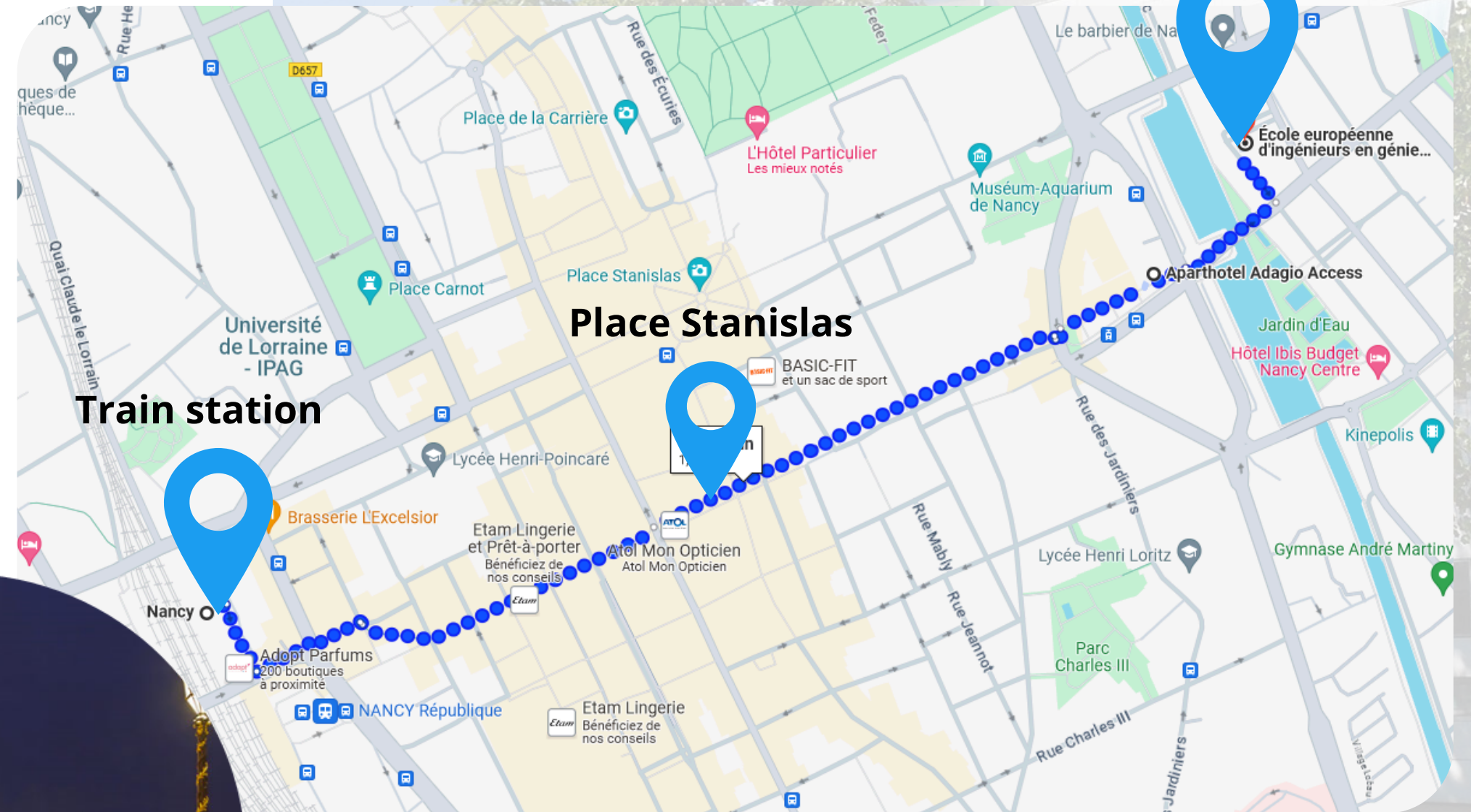
GEOGRAPHICAL SITUATION



A SCHOOL IN THE HEART OF NANCY



- ➡ **15 minutes** from the train station
- ➡ **Close** to the city center
- ➡ **University cafeteria 5 minutes** from the school



HOUSING

PUBLIC STUDENT RESIDENCES



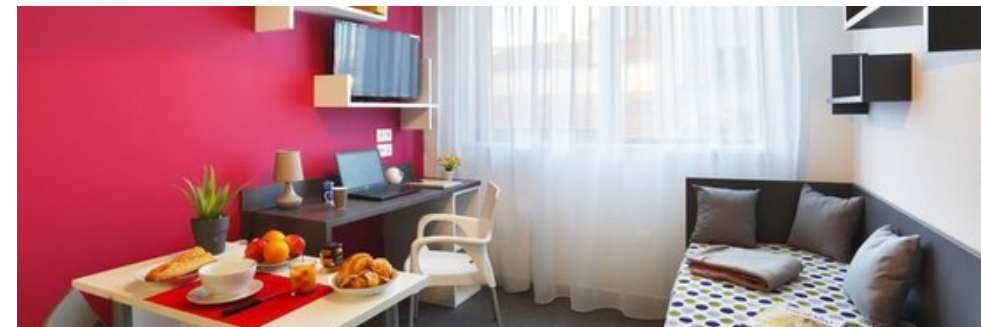
**RÉPUBLIQUE
FRANÇAISE**

*Liberté
Égalité
Fraternité*



<https://trouverunlogement.lescrous.fr/>

PRIVATE STUDENT RESIDENCES CLOSE TO THE EEIGM



NÉMÉA NANCY CAMPUS

<https://www.nemea-residence-etudiante.com/france/lorraine/location-meurthe-et-moselle-55.html>



LES ESTUDINES

<https://www.estudines.com/logement-etudiant-nancy/residence-stanislas>

OTHER POSSIBILITIES OF HOUSING

MORE INFORMATION REGARDING
SHARED FLATS AND PRIVATE
APARTMENTS AVAILABLE ON THE
WEBSITE OF THE UNIVERSITY

<https://welcome.univ-lorraine.fr/fr/logement/>

HOW WE WELCOME INTERNATIONAL STUDENTS

Bureau des Etudiants Internationaux (BEI)

Special Welcome

- Help with administrative tasks related to student's arrival in a new country
- Contact with EEIGM students before their arrival in Nancy
- **Events organized by the BEI**

More than 15 different clubs (music, travel, parties, sports, wine tasting etc.)



Join other clubs and events during the year

COST OF STUDIES

Application fees	0 € Students pay the fees to their home university
Medical insurance	20-30 € per month Social security is free but subscribing to a private insurance is highly encouraged
Liability and home insurance	30-60 € per year
Housing <ul style="list-style-type: none"> • CROUS Residence • Private Flat • Shared Flat 	<ul style="list-style-type: none"> • Between 200 € and 420 €/ month • Between 350 € and 600 €/ month • Between 300 € and 450 € month
Meals at the university's cafeteria	3,40€/meal Open during lunch and diner hours
Public transportation in Nancy	28 € per month or 9 € for 10 tickets



CAF : around 100 to 150 euros per month



Erasmus+

To be asked at your home university.

WANT TO LEARN MORE ABOUT THE PROGRAMME ? CONTACT US



David Horwat

Professor and Head of International Partnerships

EEIGM Nancy

david.horwat@univ-lorraine.fr



Héloïse Patela

International coordinator

EEIGM Nancy

heloise.patela@univ-lorraine.fr
eeigm-international@univ-lorraine.fr

